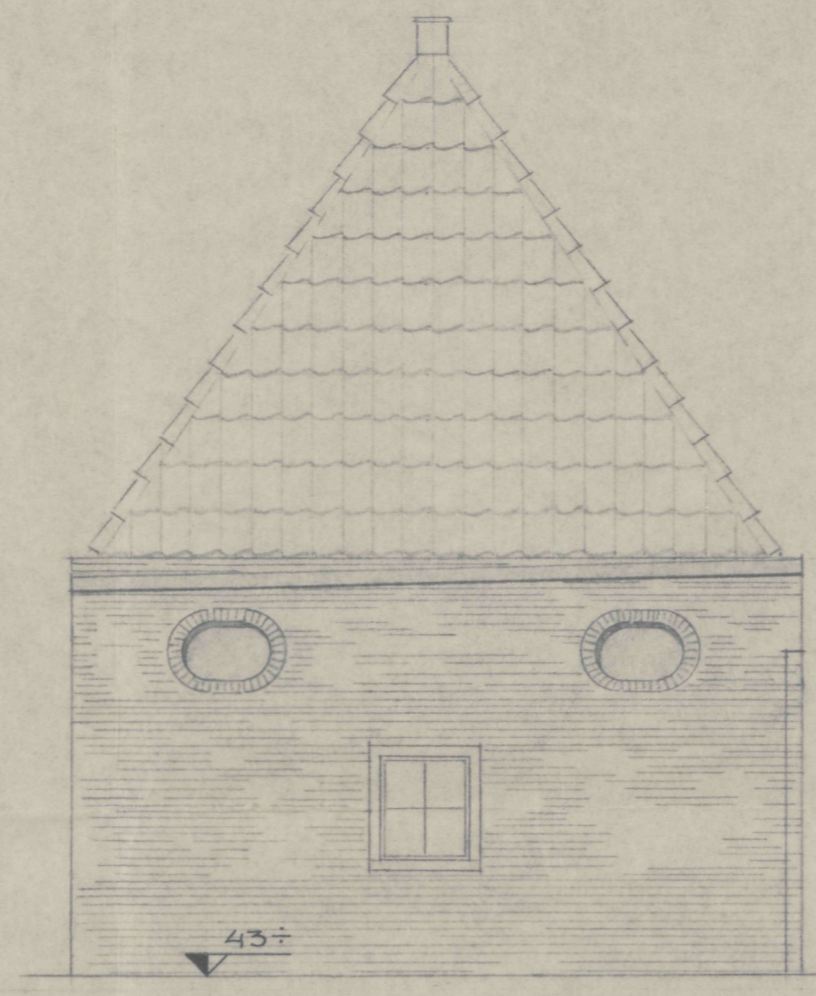
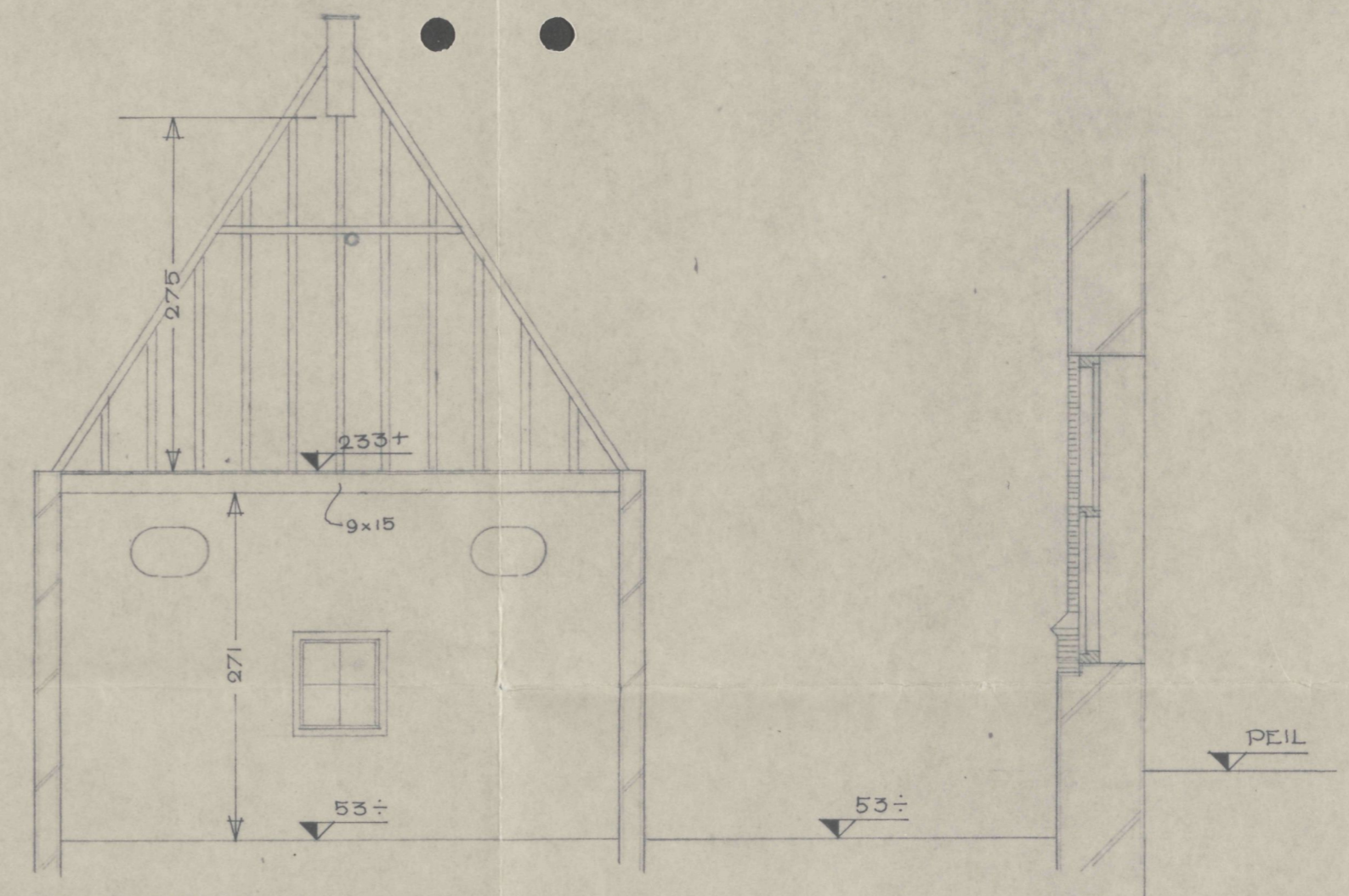




VOORGEVEL GROTE OOST

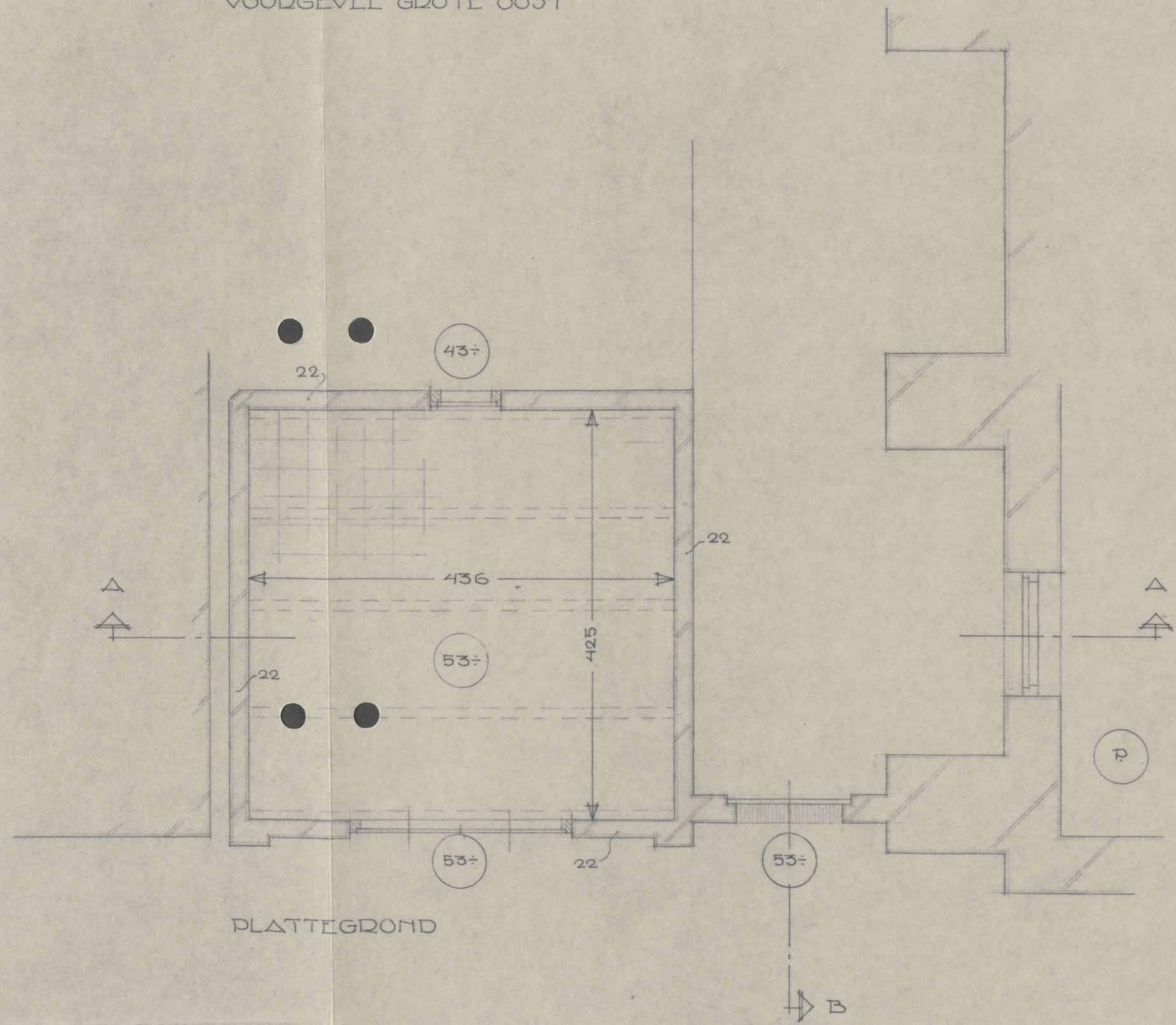


ACHTERGEVEL

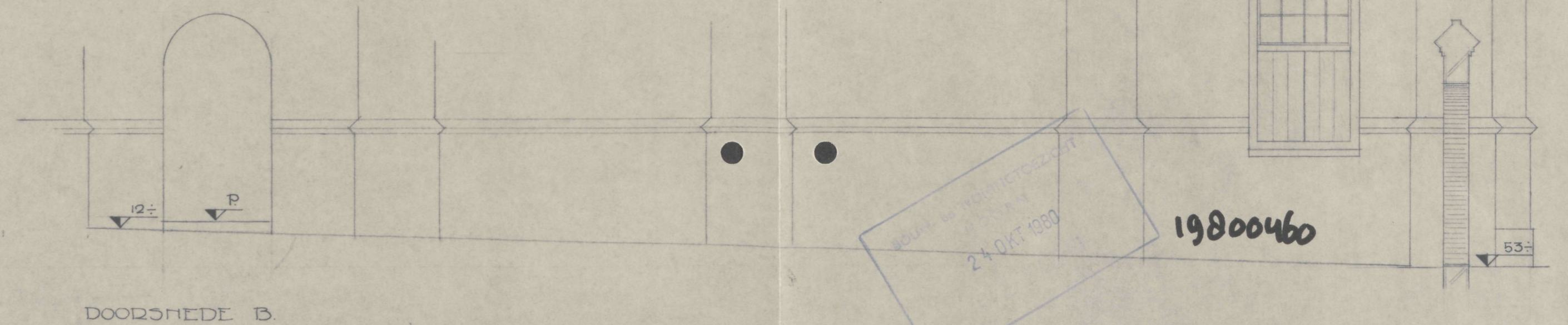


DOORSNEDEN A.

PEIL IS BOVENKANT DORPEL KERK  
INGANG GROTE OOST.



PLATTEGROND



DOORSNEDEN B.

Behoort bij besluit van  
de raad/burgemeester en wethouder  
der gemeente Hoorn dd. 23.01.80 nr. 400.30  
Mij bekend,  
de gemeente secretaris  
van Hoorn,

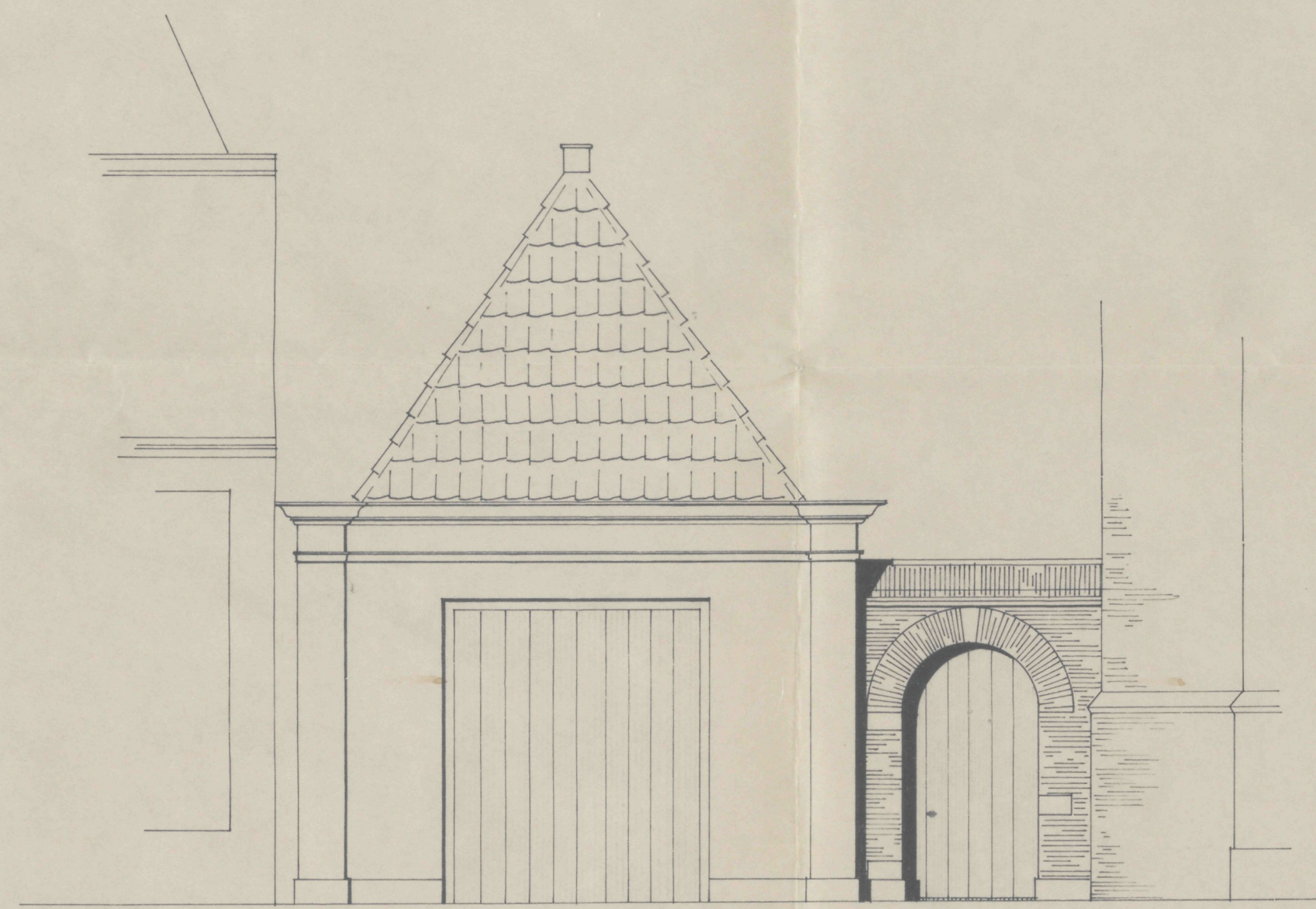
*M. Kok*

BOUW- en TOEGESTELT  
24 OKT 1980

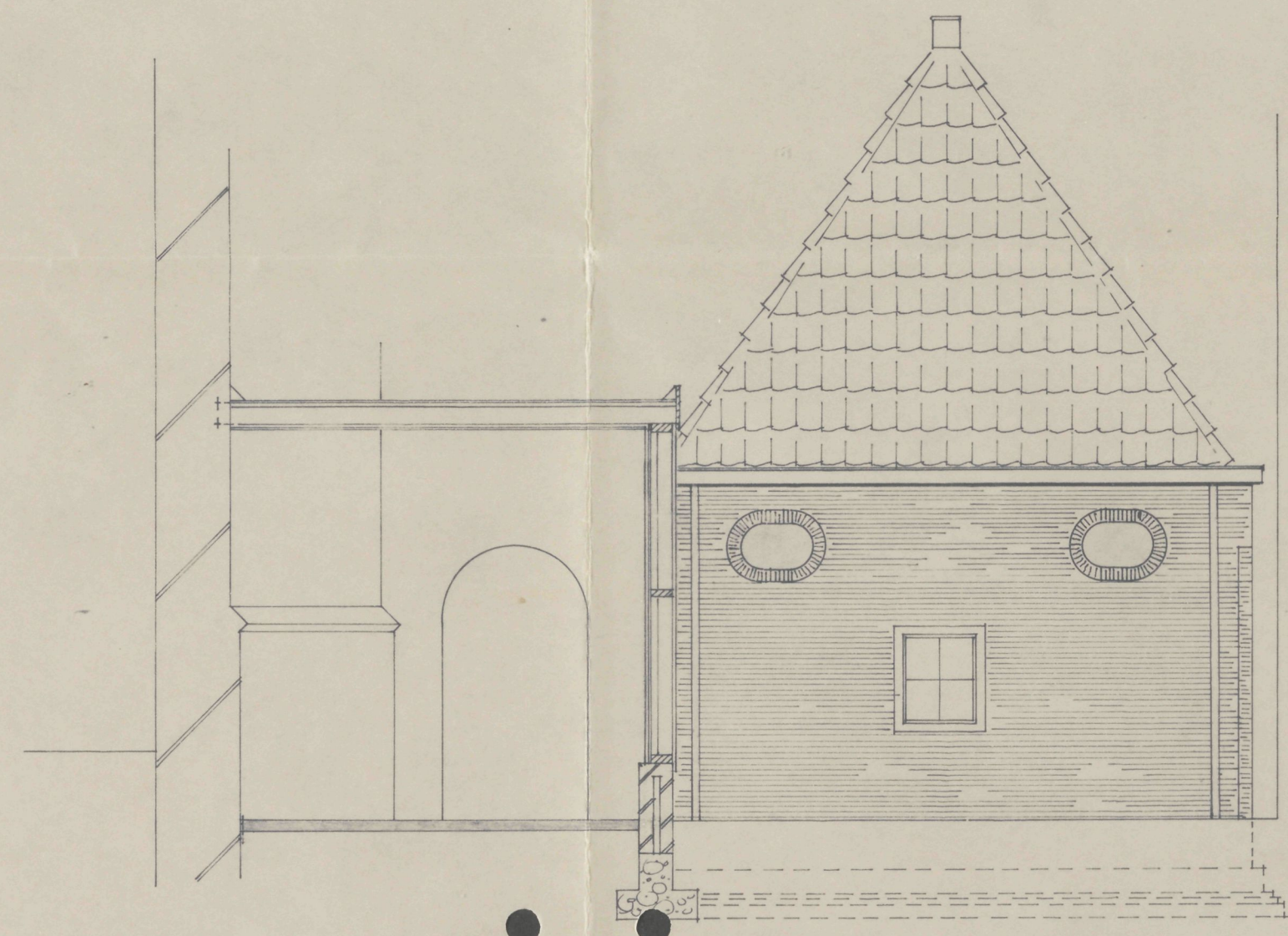
19800460

INGEKOMEN  
-20 OKT 1980

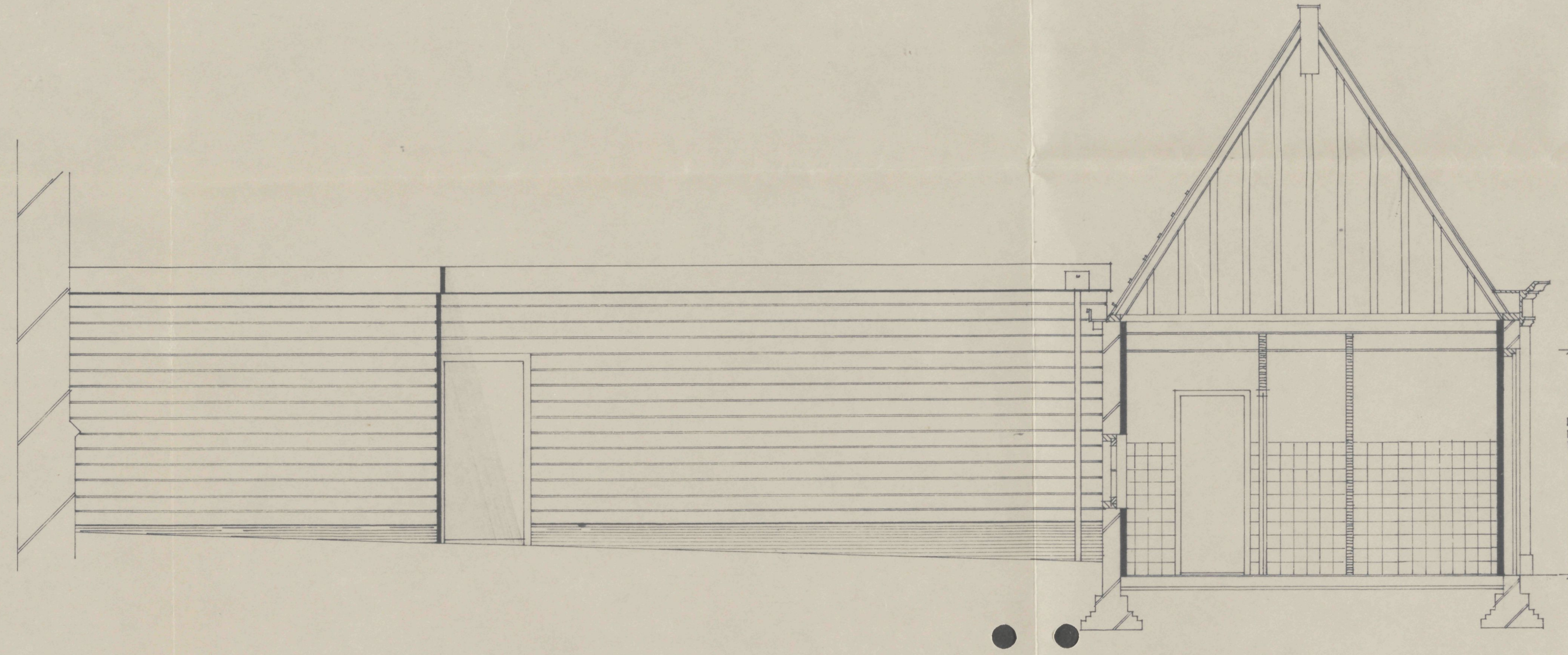
ARCHITECTS  
TELIER  
A. KOK EN ZH.  
AMSTERDAM.  
OCT. 78.



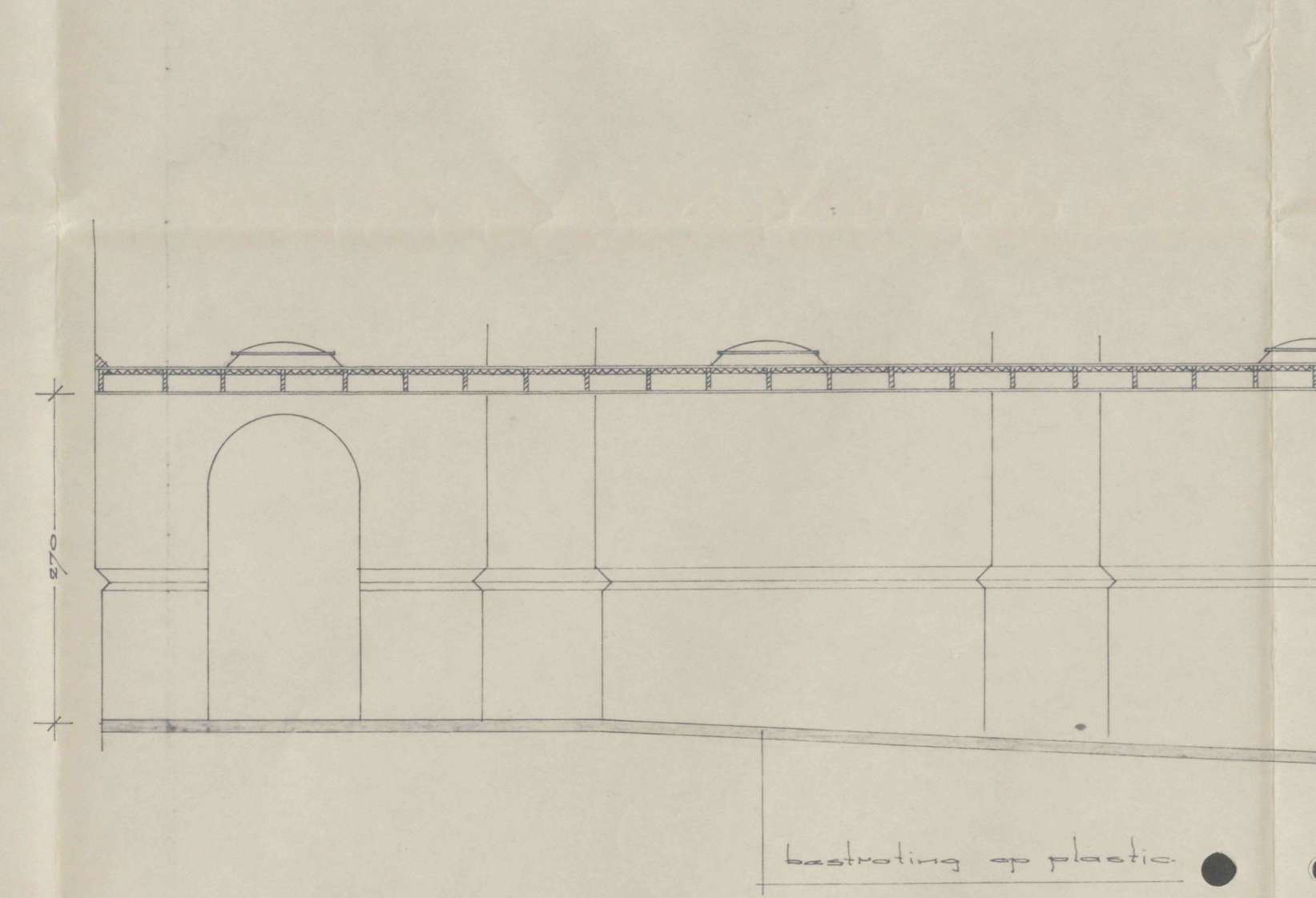
GEVEL GROTE OOST



DOORSNED E-A

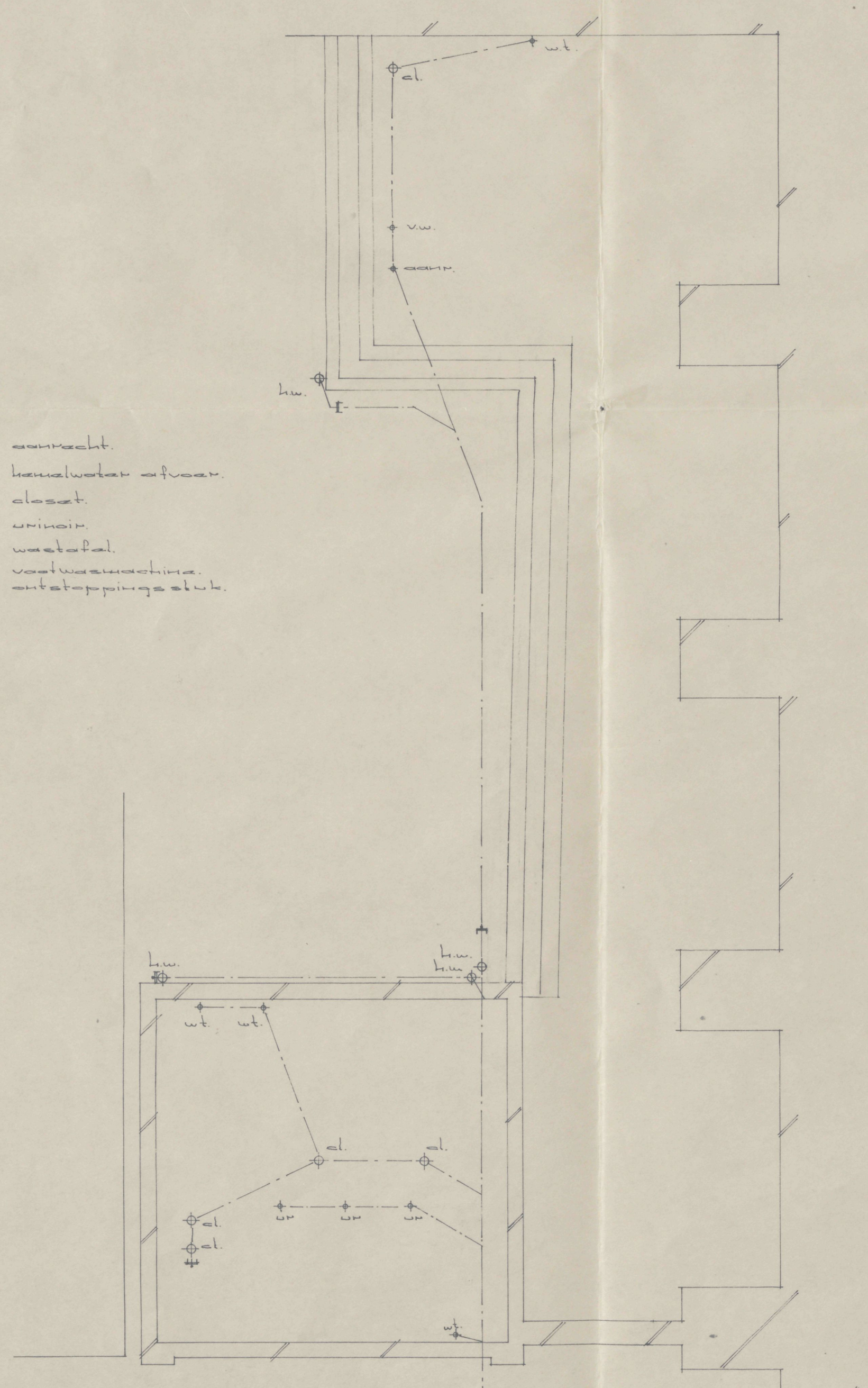


DOORSNED E-C

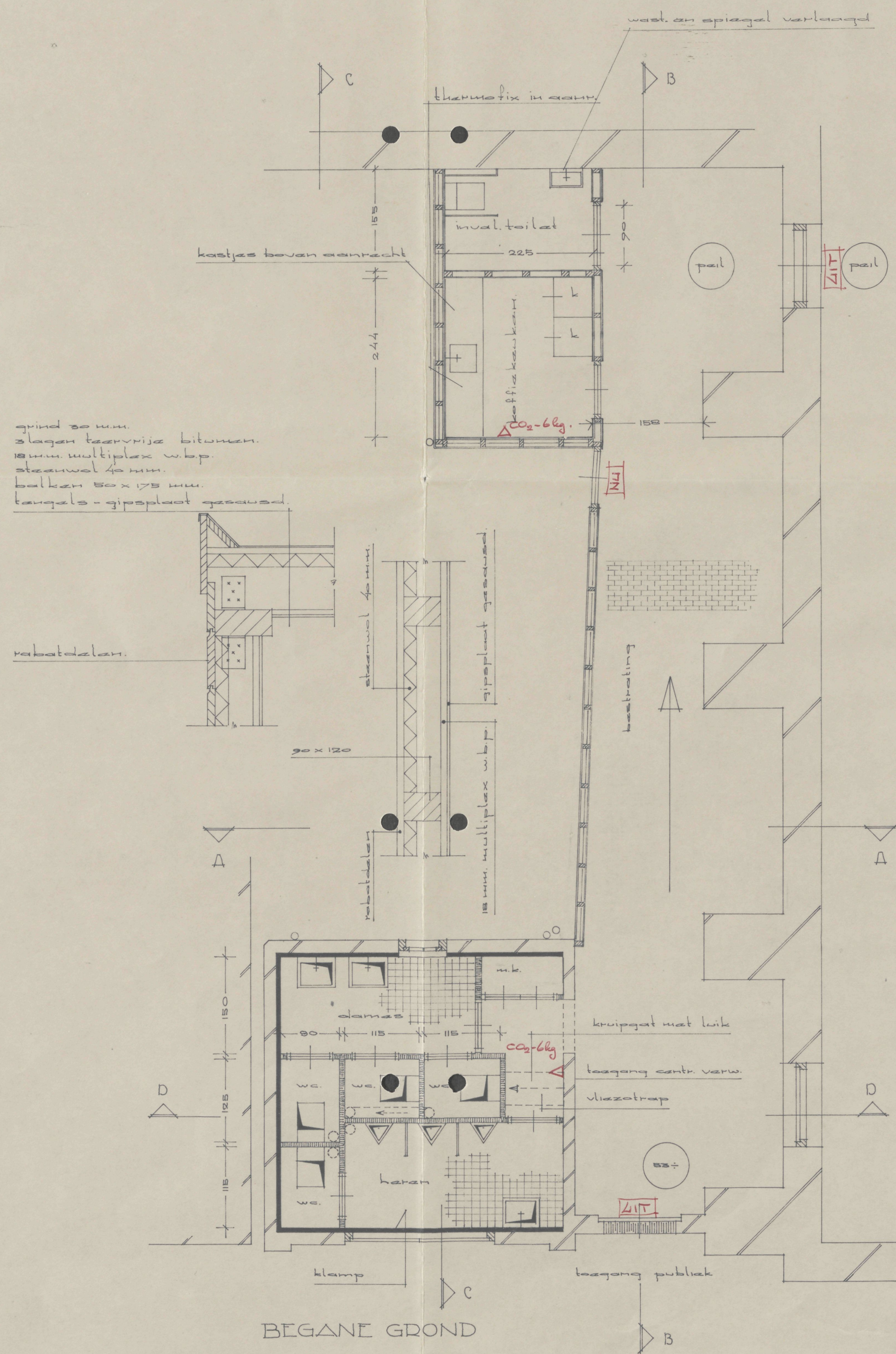


DOORSNED E-B

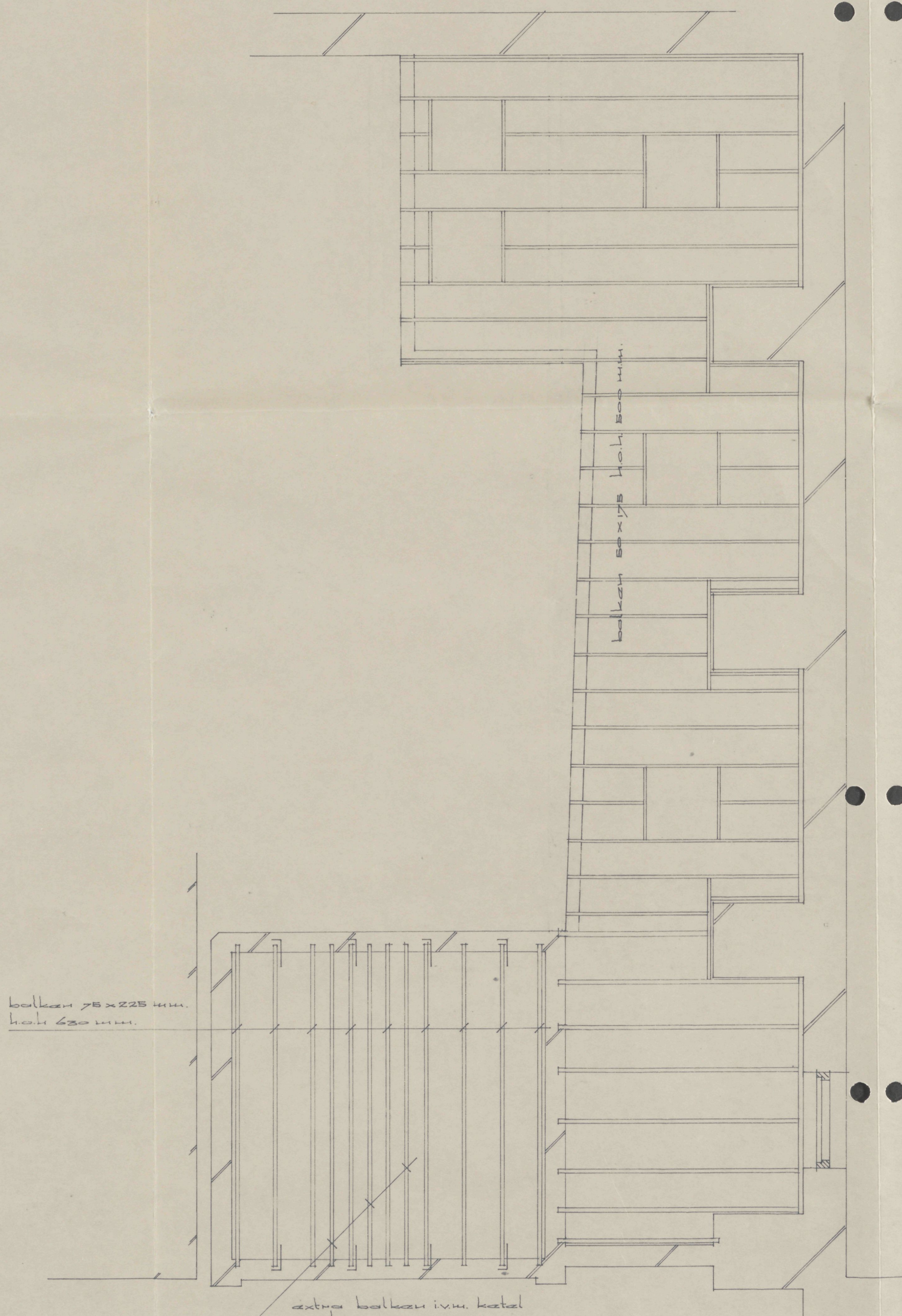
- aan aangeeft
- in aansluiting op
- al aangeeft
- en aangeeft
- ut aangeeft
- en aangeeft
- ut aangeeft



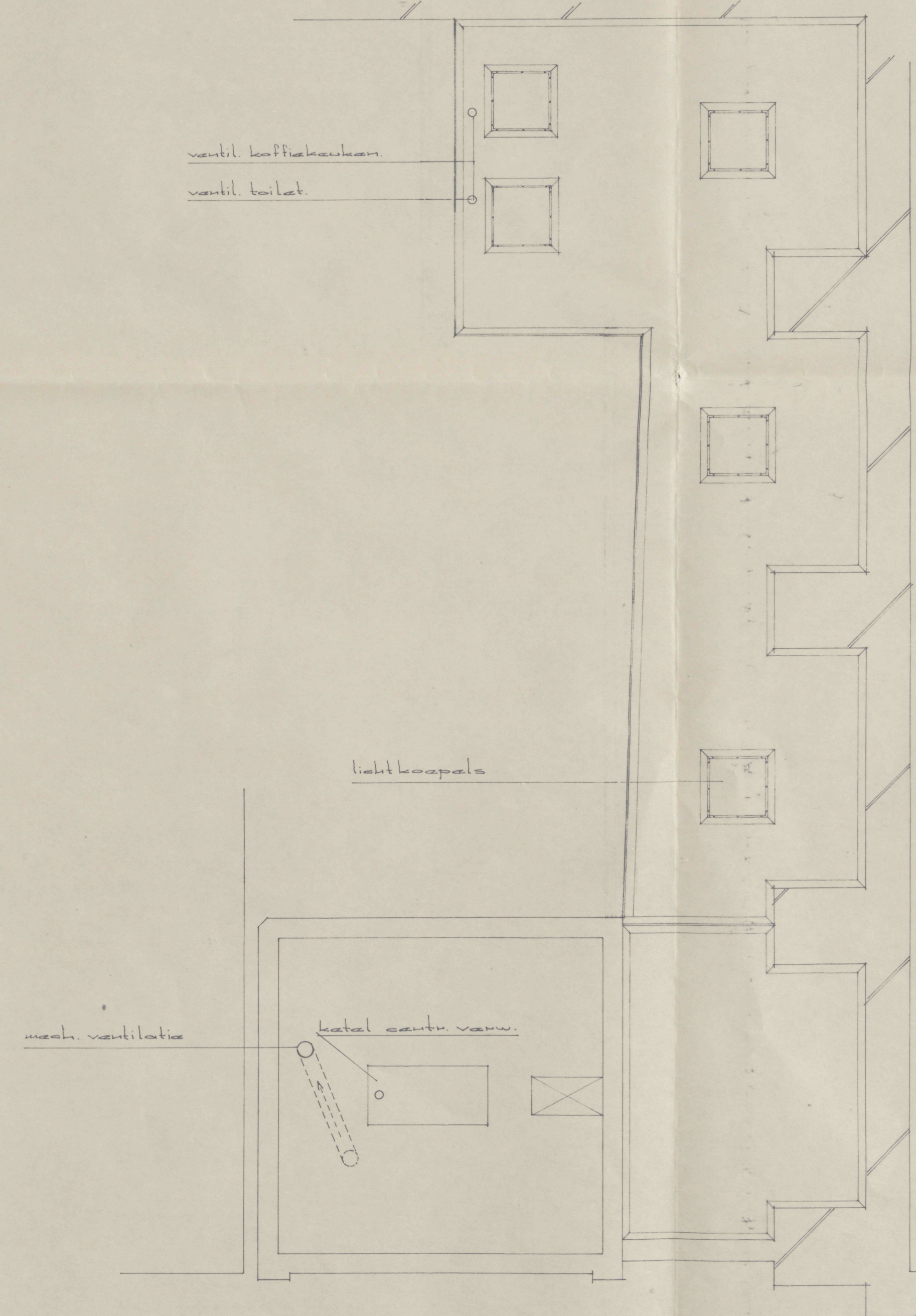
FUNDERING = DIOLEDING



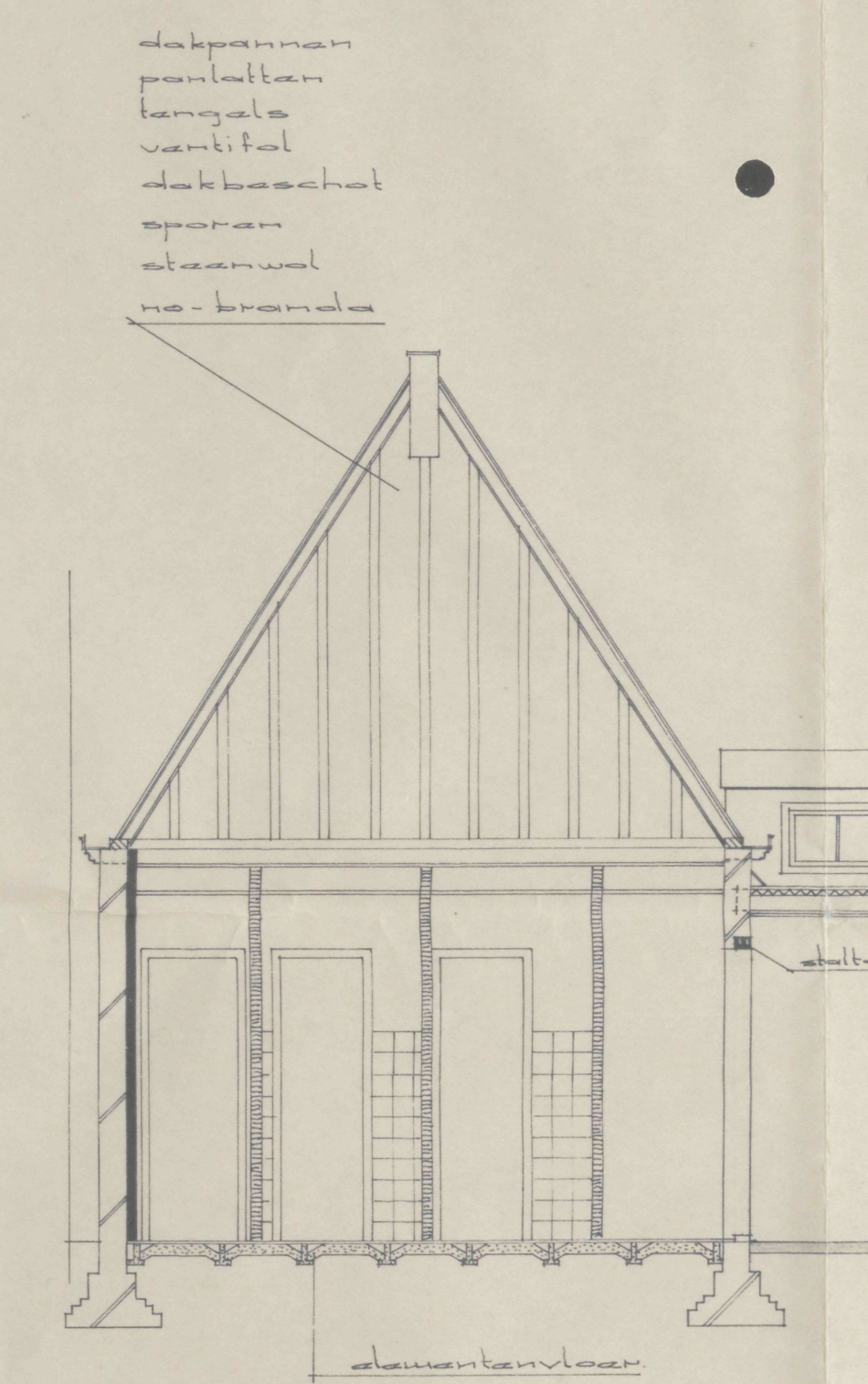
BEGANE GROND



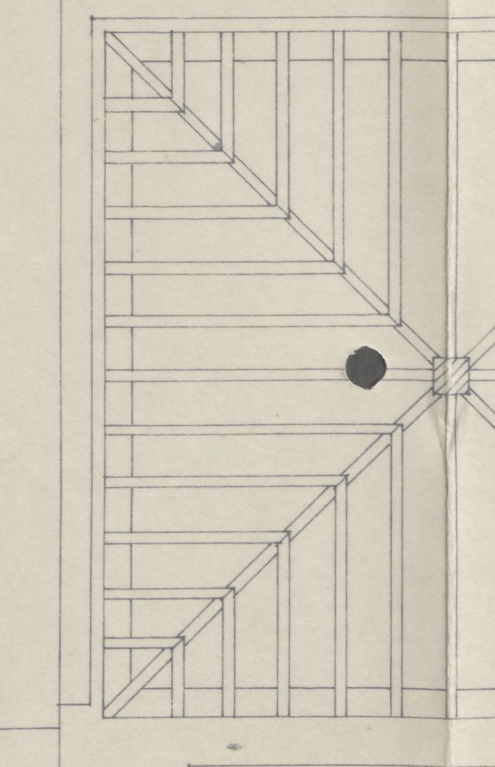
BALKLAAG ZOLDER



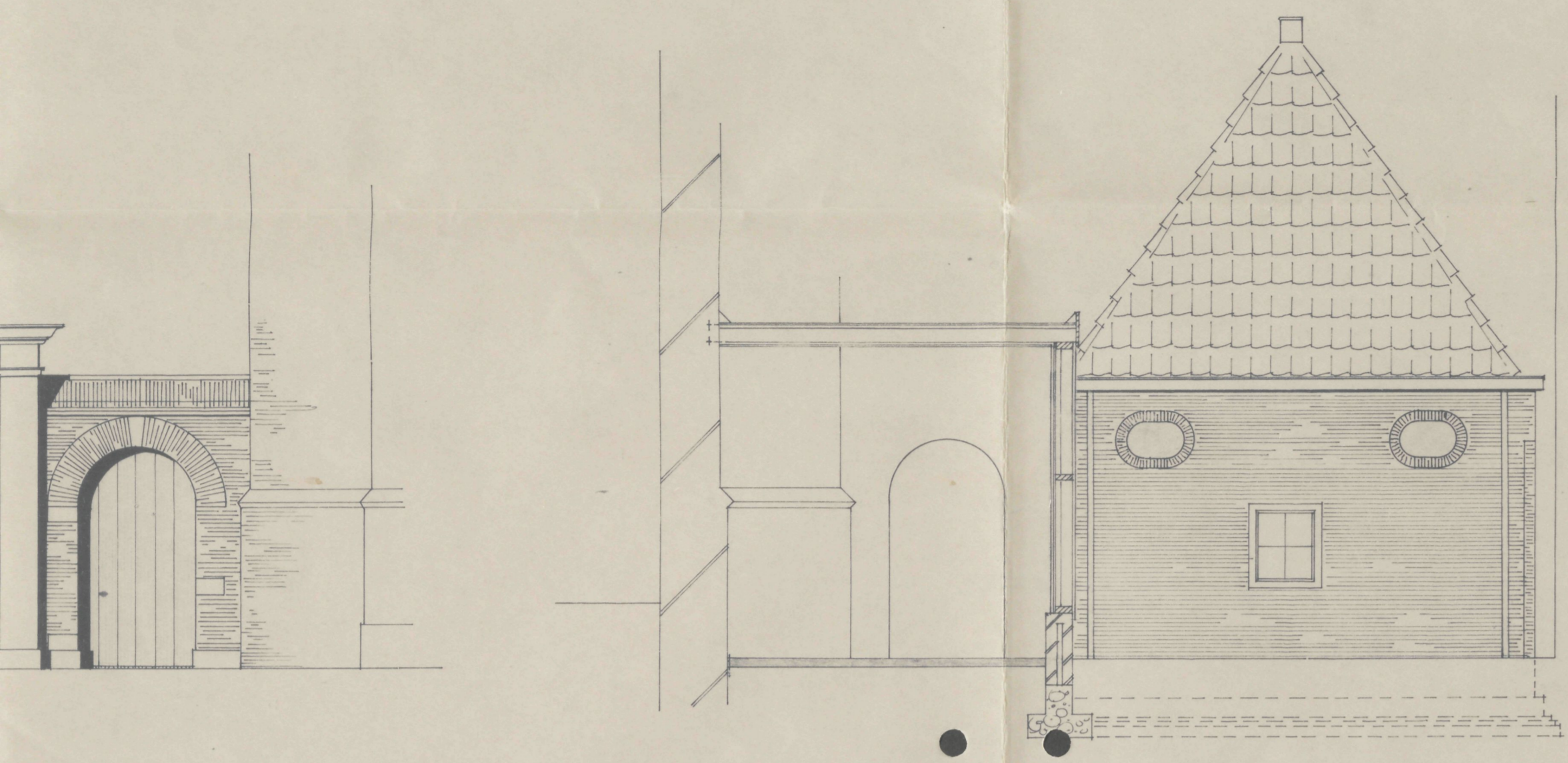
ZOLDER



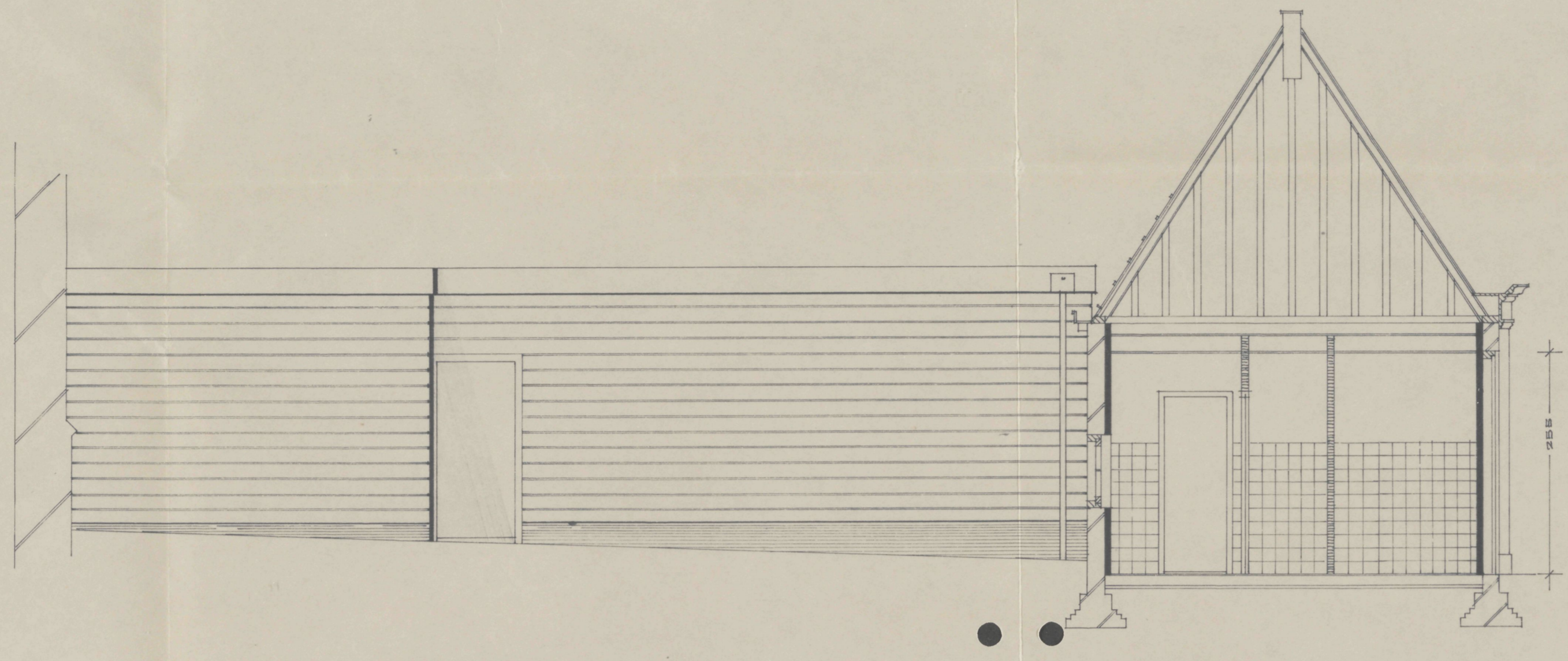
DOORSNED E-D



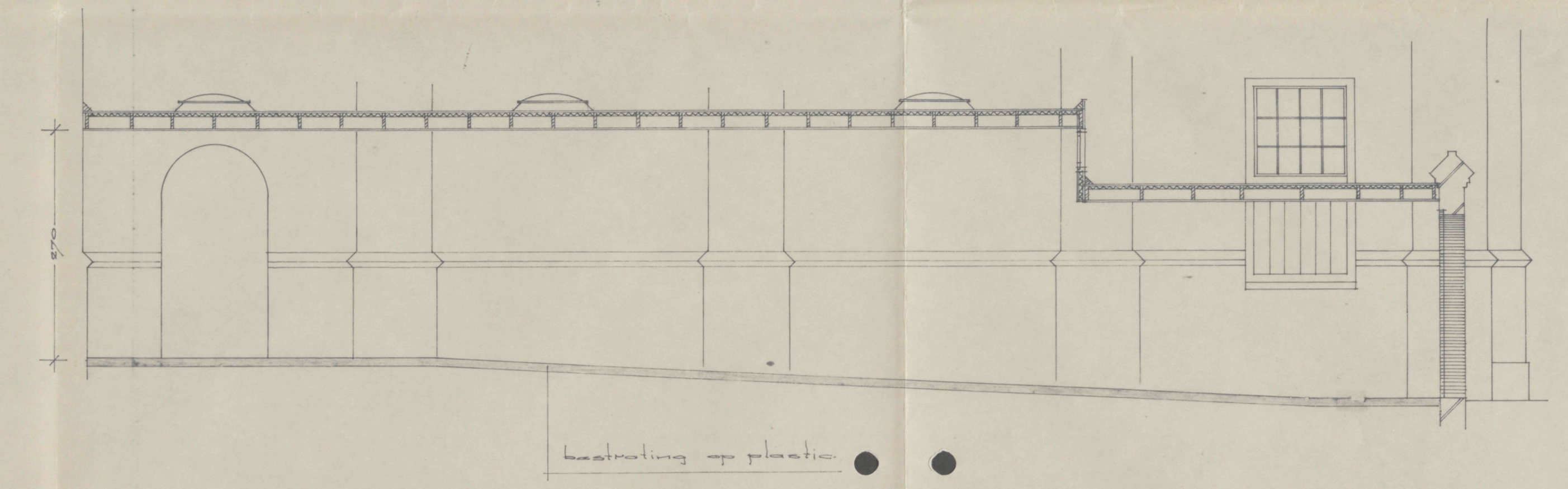
KAD



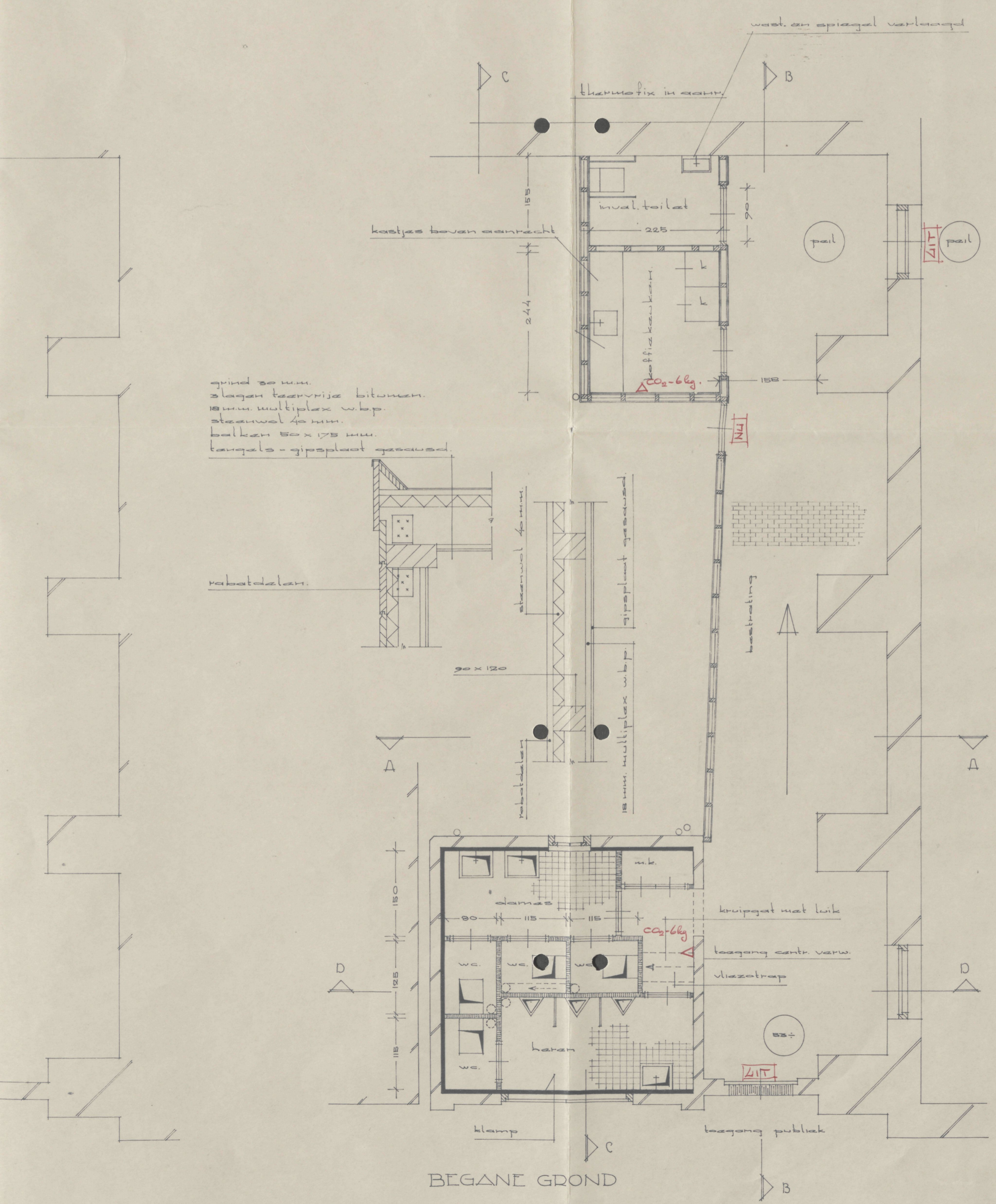
DOORSNIDE -A-



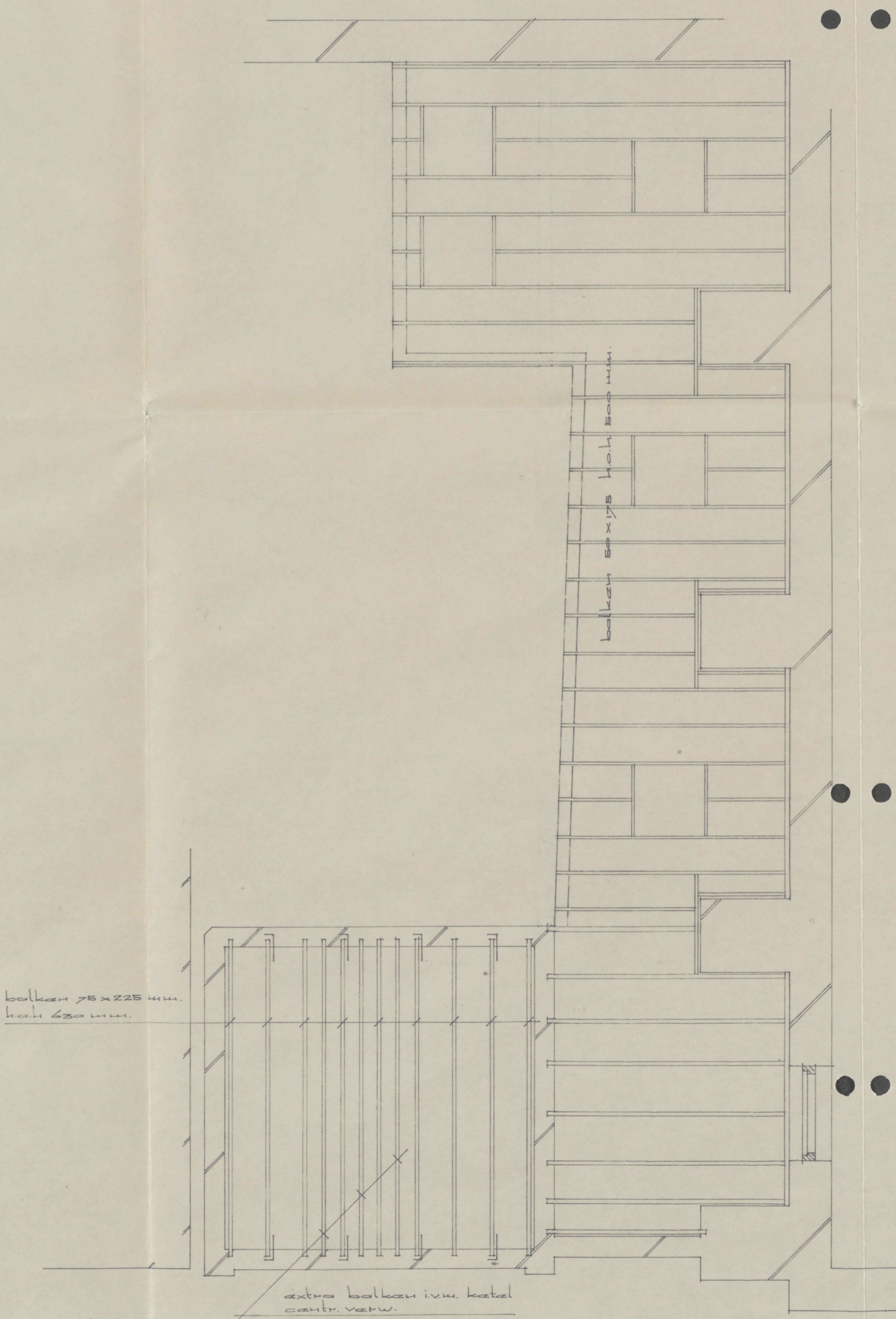
DOORSNIDE -C-



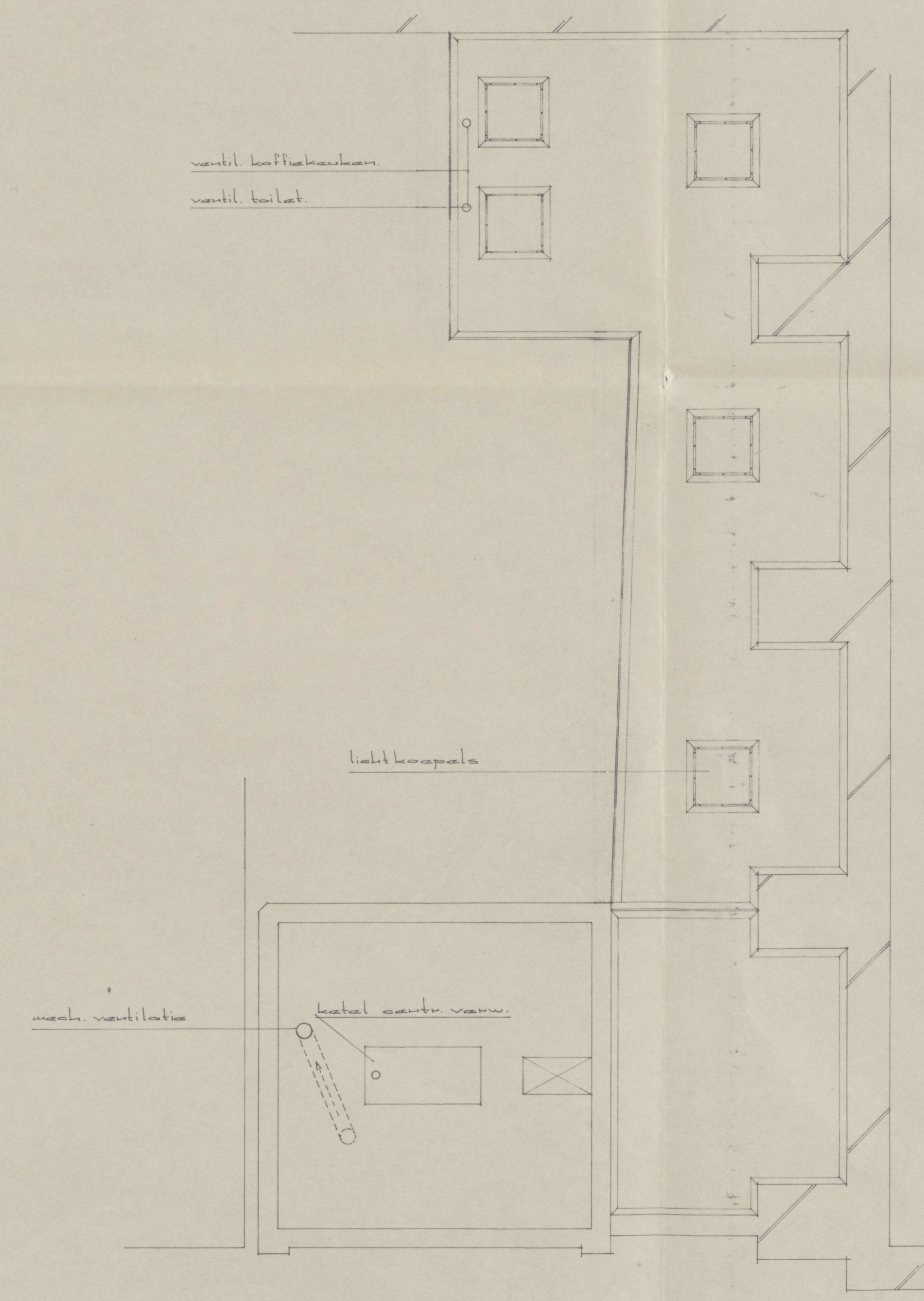
DOORSNIDE -B-



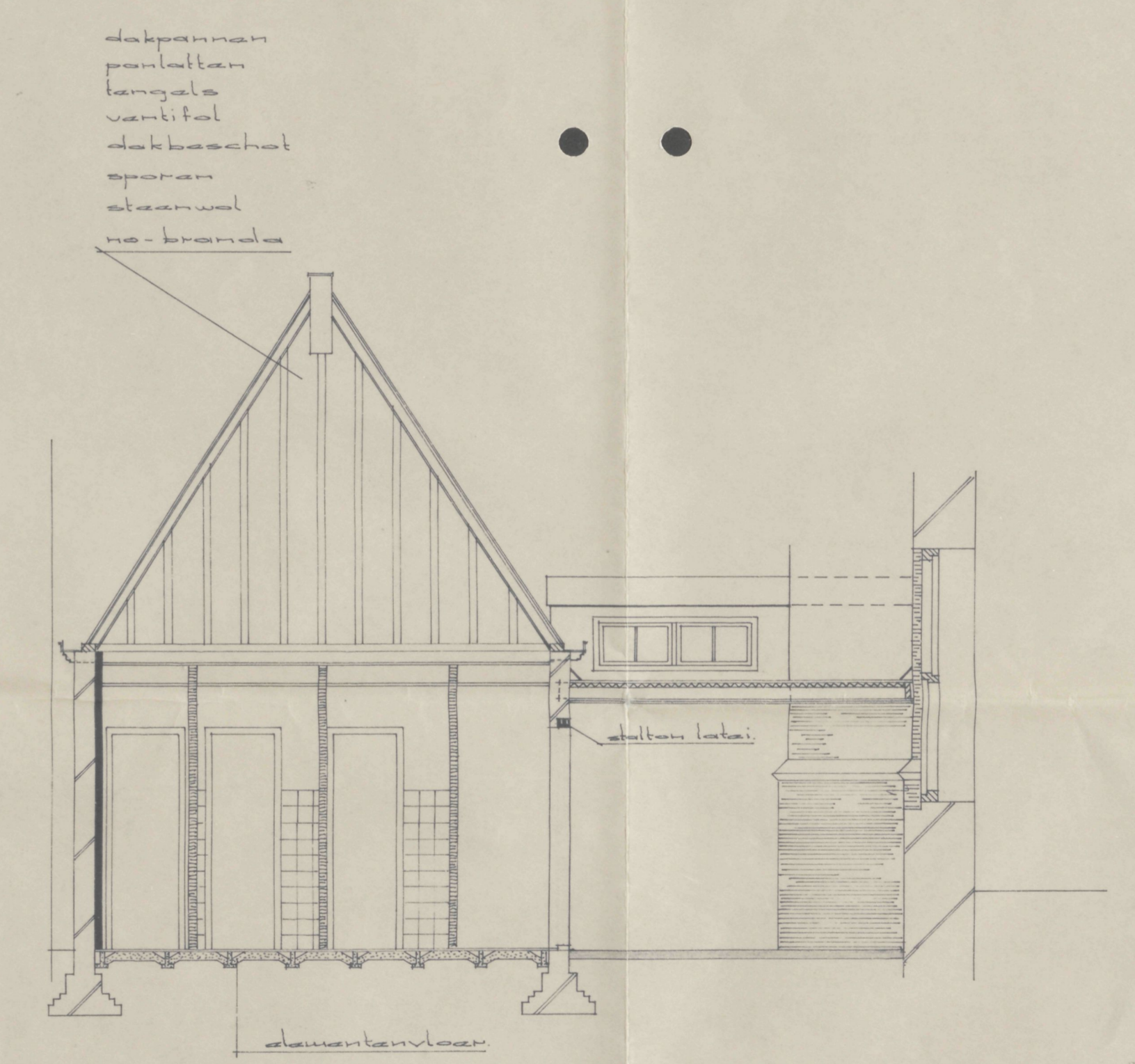
BEGANE GROND



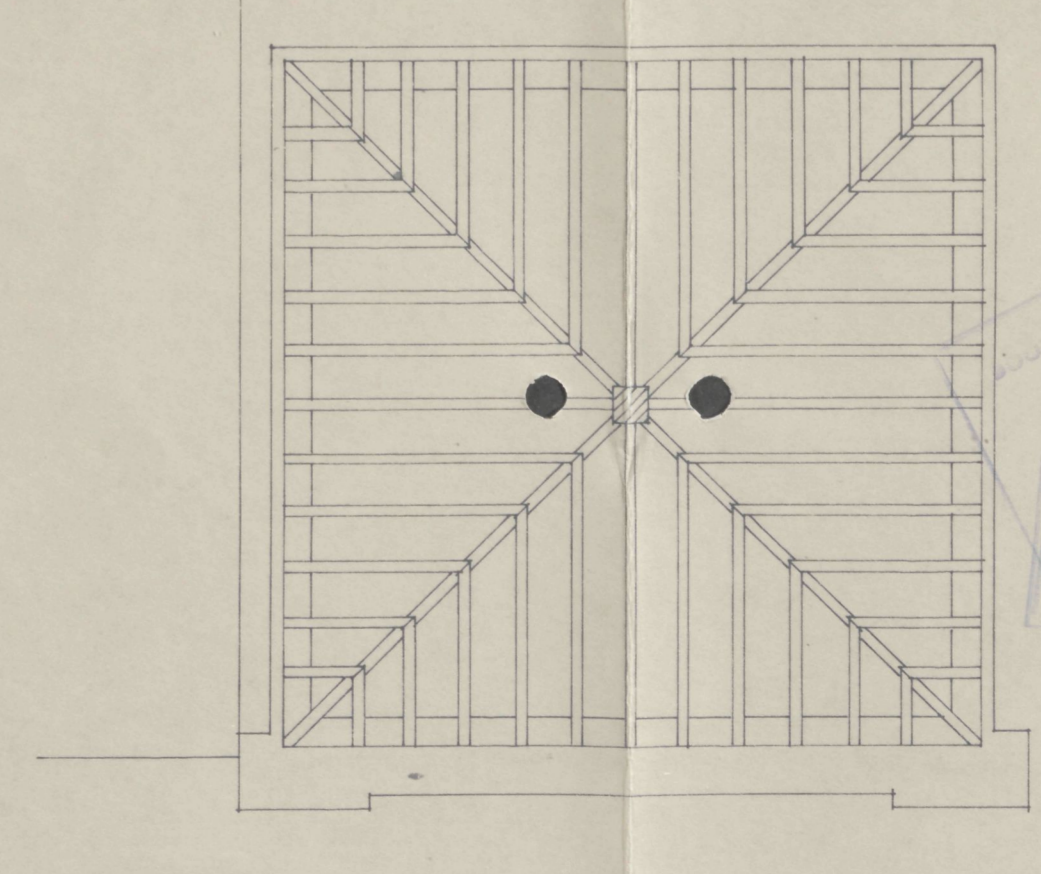
BALKLAAG ZOLDER



ZOLDER



DOORSNIDE -D-



KAD

INGEKOMEN  
20 OKT 1930  
24 OKT 1930

19800460

Schoot bij Lohit van en medelidende de architecten 20.01.31 in voo. 30 de gemeente Hooft. In bekend. de gemeente secretaris van Hooft.

*Mus*

architecten atelier van Hooft en van medelidende april 1930 april 1930 juli 1930